

- A: Camera Mount Top Bar (1x)
- B: Camera Mount Post (2x)
- C: Camera Mount Foot (2x)
- D: 1/4"-40 x 1" Socket Cap Screw (2x)
- E: 10-32 x 3/4", Zinc, Flat Head, Phillips (4x)

PROJECT

**My First Project**

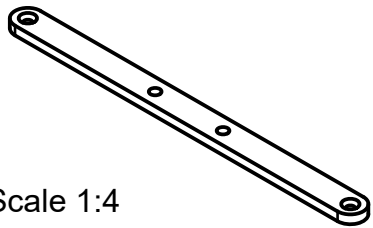
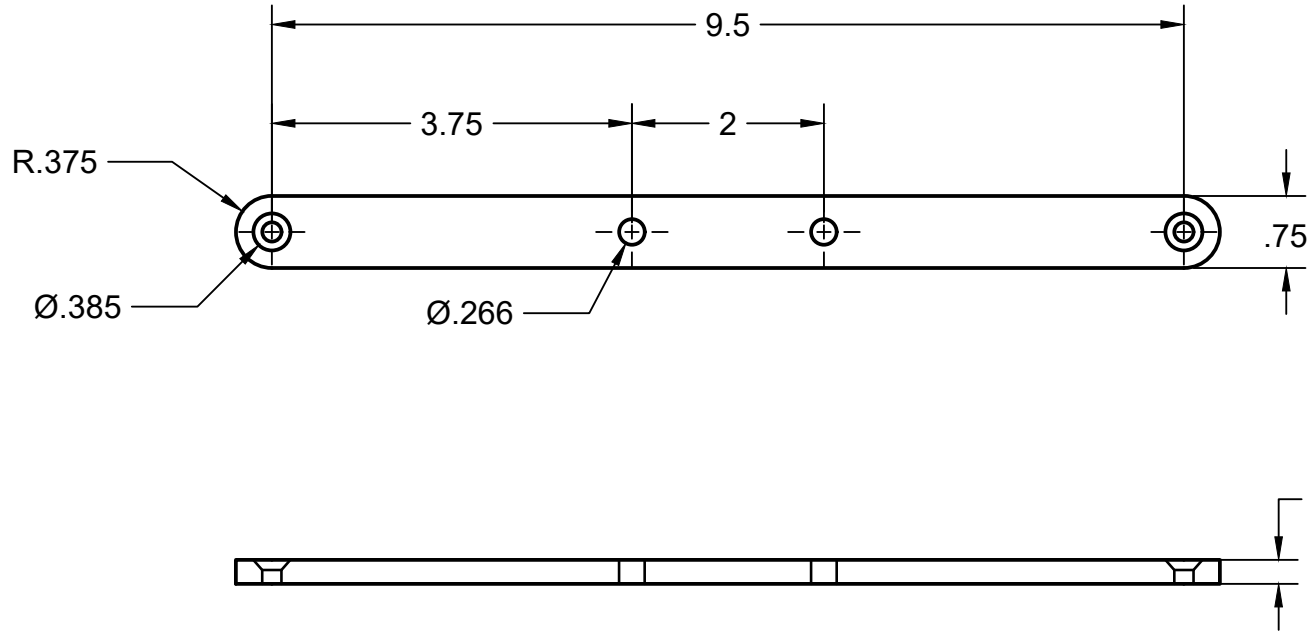
TITLE

**Camera-Mount-Assembly  
Assembled**

APPROVED	SIZE	CODE	DWG NO	REV
CHECKED	A			
DRAWN	Max Fairlamb	6/1/2021	SCALE 1:2	WEIGHT
				SHEET 1/4

Unless otherwise stated:

.XX ±.01  
.XXX ±.005  
.XXXX ±.0005  
Angles ±.5°

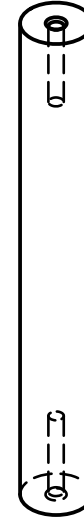
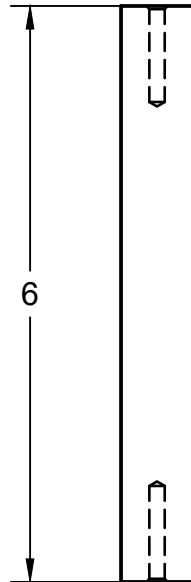
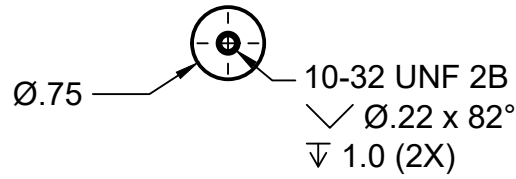


Scale 1:4

		PROJECT			
		My First Project			
		TITLE			
		Camera-Mount-Assembly Top Bar (1x)			
APPROVED	SIZE	CODE	DWG NO	REV	
CHECKED	A				
DRAWN	Max Fairlamb	6/1/2021	SCALE 1:2	WEIGHT	SHEET 2/4

Unless otherwise stated:

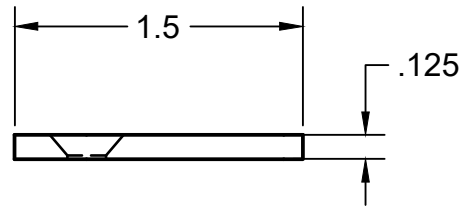
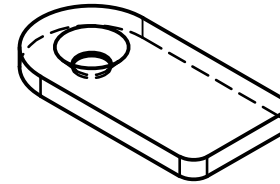
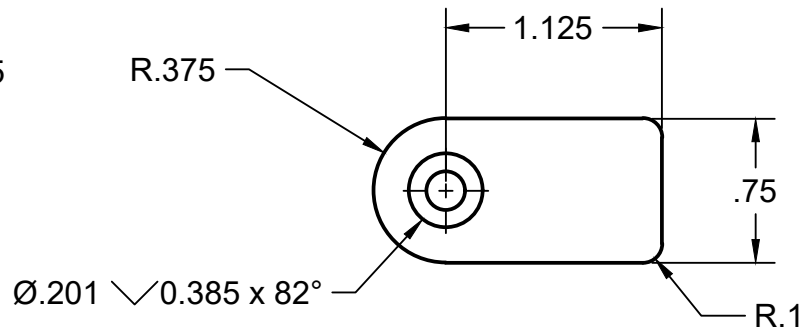
.XX ±.01  
.XXX ±.005  
.XXXX ±.0005  
Angles ±.5°



	PROJECT				
	My First Project				
	TITLE				
	Camera-Mount-Assembly Post (2x)				
APPROVED	SIZE	CODE	DWG NO	REV	
CHECKED	A				
DRAWN	Max Fairlamb	6/1/2021	SCALE 1:2	WEIGHT	SHEET 3/4

Unless otherwise stated:

.XX ±.01  
 .XXX ±.005  
 .XXXX ±.0005  
 Angles ±.5°



	PROJECT			
	prismTIRF Microscope			
	TITLE			
	Camera-Mount-Assembly Foot (2x)			
APPROVED	SIZE	CODE	DWG NO	REV
CHECKED	A			
DRAWN	Max Fairlamb	6/1/2021	SCALE 1:1	WEIGHT
				SHEET 4/4